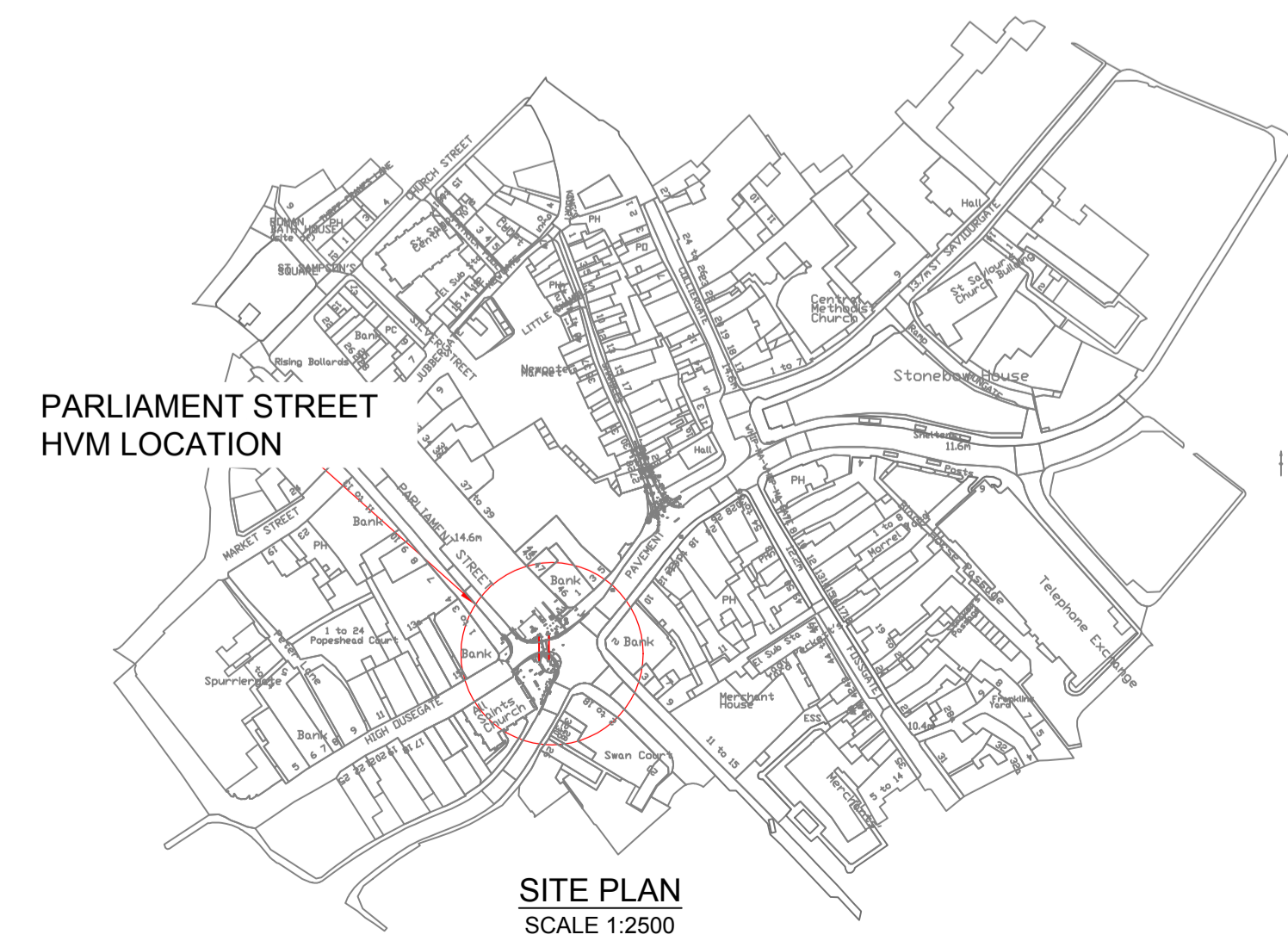
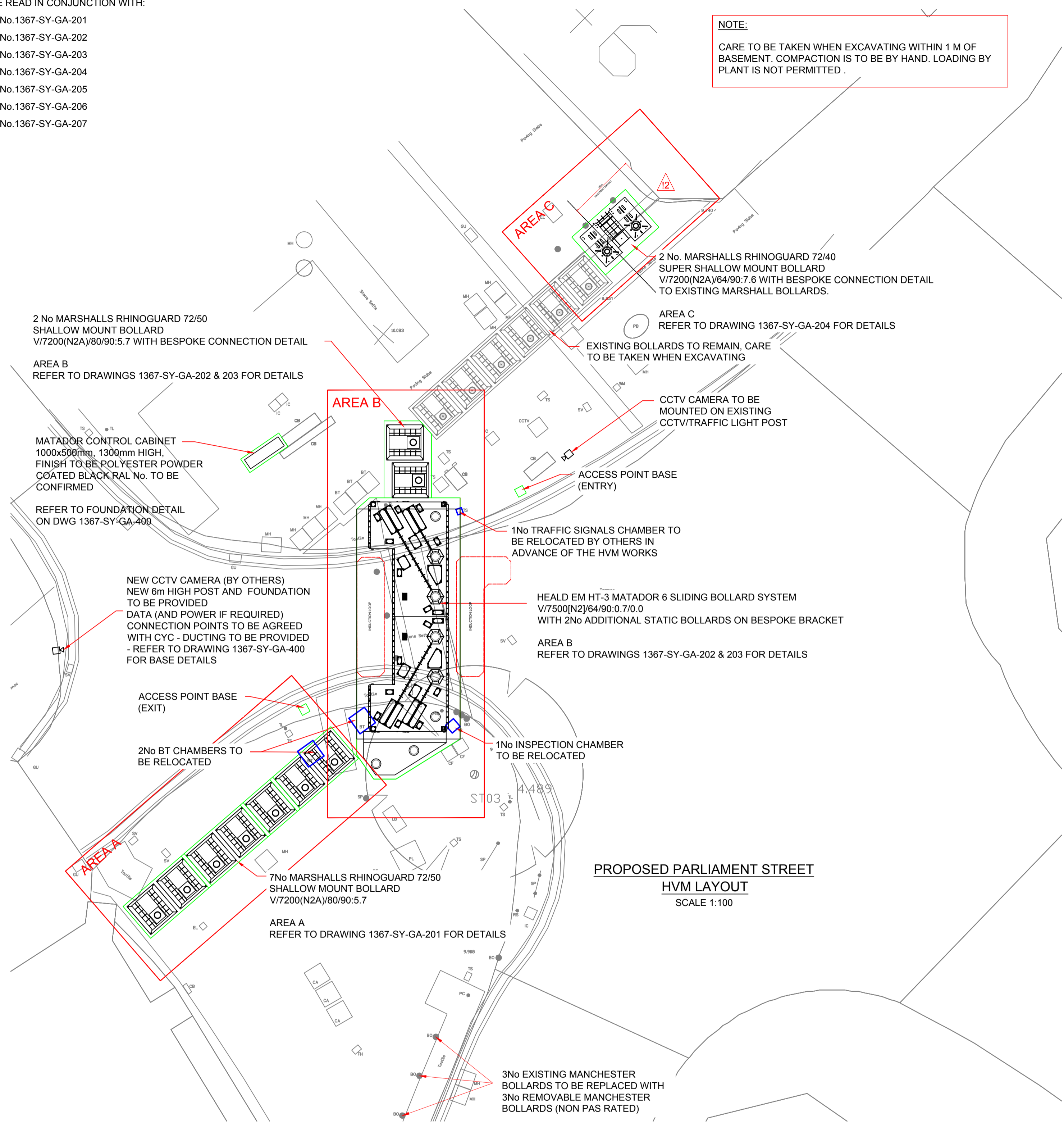


TO BE READ IN CONJUNCTION WITH:

- DWG No.1367-SY-GA-201
- DWG No.1367-SY-GA-202
- DWG No.1367-SY-GA-203
- DWG No.1367-SY-GA-204
- DWG No.1367-SY-GA-205
- DWG No.1367-SY-GA-206
- DWG No.1367-SY-GA-207

NOTE:
CARE TO BE TAKEN WHEN EXCAVATING WITHIN 1 M OF BASEMENT. COMPACTION IS TO BE BY HAND. LOADING BY PLANT IS NOT PERMITTED.



- GENERAL**
1. DO NOT SCALE FROM THIS DRAWING.
 2. ANY QUERIES ARE TO BE REFERRED BACK TO THE ENGINEER FOR CLARIFICATION.
- CONCRETE**
3. ALL CONCRETE IN ACCORDANCE WITH BS 8500.
 4. CONCRETE DESIGNATED MIX: AS PER BOLLARD MANUFACTURERS SPECIFICATION. NO ADMIXTURE IS TO BE USED WITHOUT THE ENGINEERS PERMISSION.
 5. SHOULD THE AIR TEMPERATURE RISE ABOVE 30°C OR FALL BELOW 5°C, SPECIAL PRECAUTIONS ARE TO BE TAKEN, ALL TO ENGINEER'S APPROVAL.
 6. ANY SOFT SPOTS WITHIN THE GROUND REMOVED AND BACKFILLED WITH TYPE 1 FILL MATERIAL. PRIOR TO PLACING OF BLINDING CONCRETE. FILL MATERIAL WELL COMPACTED IN 300mm LAYERS.
 7. CURING TO BE DONE FOR AT LEAST 7 DAYS PRIOR TO ANY LOADING BEING APPLIED TO THE FOUNDATION.
 8. REINFORCEMENT BARS TO BE HIGH YIELD STEEL TO CURRENT BS 4449, FABRIC REINFORCEMENT TO BS 4483.
 9. REINFORCEMENT SCHEDULING TO BS 8666.
 10. REINFORCEMENT AS PER BOLLARD MANUFACTURERS SPECIFICATION.
 11. REINFORCEMENT LAP LENGTHS ARE TO BE A MINIMUM OF 72 D UNLESS OTHERWISE NOTED.
 12. ALL MATERIAL AND WORKMANSHIP IN ACCORDANCE WITH RECOMMENDATIONS OF BS 8110.
- BOLLARDS**
13. PRODUCTS TO BE INSTALLED IN ACCORDANCE WITH MANUFACTURERS GUIDELINES AND REQUIREMENTS.
 14. FOUNDATIONS PROVIDED IN ACCORDANCE WITH MANUFACTURERS RECOMMENDATIONS.
 15. ALL BOLLARD PRODUCTS TO BE SUCCESSFULLY IMPACT TESTED TO PAS 68 / IWA 14
 16. THE GAP BETWEEN BOLLARD CORES SHALL BE NO MORE THAN 1200mm AT 600mm ABOVE FINISHED GROUND LEVEL.
 17. SHROUD MATERIAL: STAINLESS STEEL
 18. SHROUD FINISH TO BE AGREED WITH THE CLIENT
 19. SHROUD TO HAVE 50mm REFLECTIVE BAND
- ROOT PROTECTION**
20. HAND DIGGING TO BE CARRIED OUT IN ALL ROOT PROTECTION ZONES. ALL EXPOSED ROOTS ARE TO REMAIN. ROOTS TO BE PROTECTED AND PROVIDED WITH HESSIAN WRAP AND A SPLIT DUCT. THE ROOT IS NOT TO COME IN CONTACT WITH THE CONCRETE AT ANY TIME. ANY QUERIES TO BE REFERRED TO THE TREE SPECIALIST.

A	31.05.22	TENDER ISSUE	MJH	SLP	
REV	DATE	DESCRIPTION	BY	CHKD	APVD

CONTRACT NAME:
YORK CITY CENTRE HVM SCHEME

CLIENT:
CITY OF YORK COUNCIL

D.J. Goode & Associates Ltd.
Consulting Civil Engineers.
The Old Control Tower,
Lavenham Airfield,
Old Bury Road,
Alpheton,
Sudbury, Suffolk,
CO10 9BT.

Tel: 01284 827472
Email: p1@djgoode.co.uk

© D.J. Goode & Associates Ltd. 2020



DRAWN BY:	DATE:	CHECKED BY:	DATE:	APPROVED BY:	DATE:
MJH	24.03.22	SLP	08.04.22		
SIGNED:		SIGNED:		SIGNED:	

DRAWING TITLE:
**PARLIAMENT STREET HVM SCHEME
PROPOSED LAYOUT**

SCALE:	DRAWING STATUS:	PROTECTIVE MARKING:
1:100 @ A1	TENDER	
DRAWING NUMBER:		REV:
1367-SY-GA-200		A